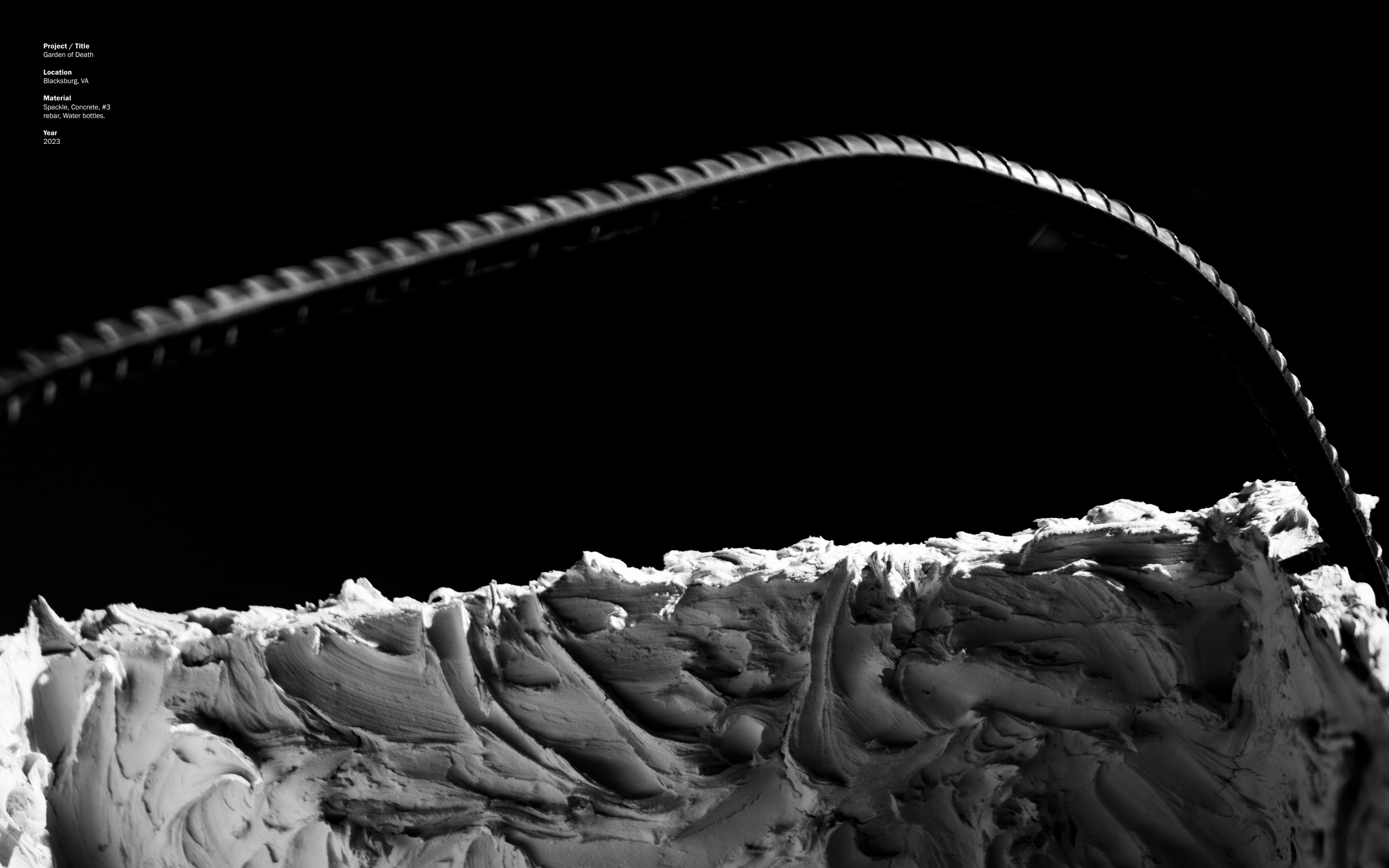


**Project / Title**  
Garden of Death

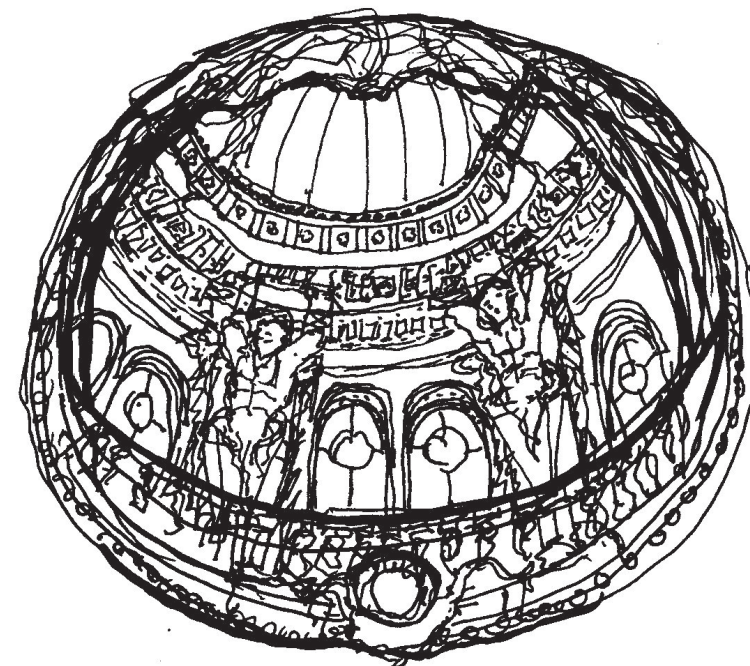
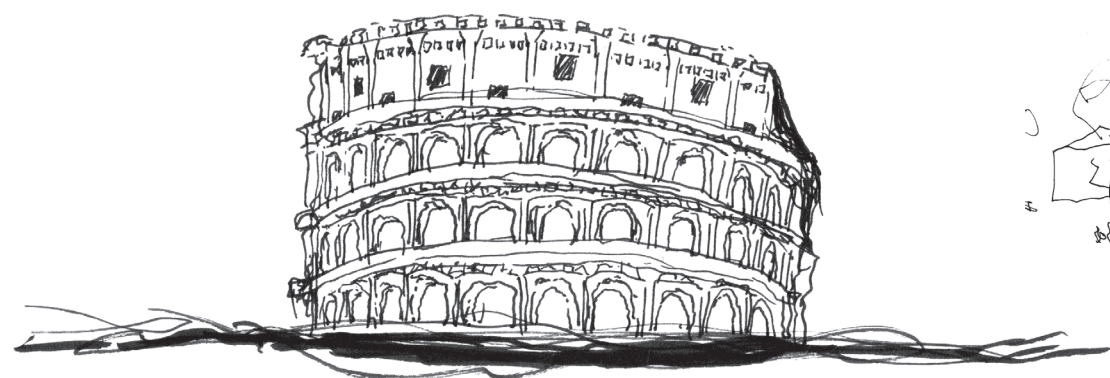
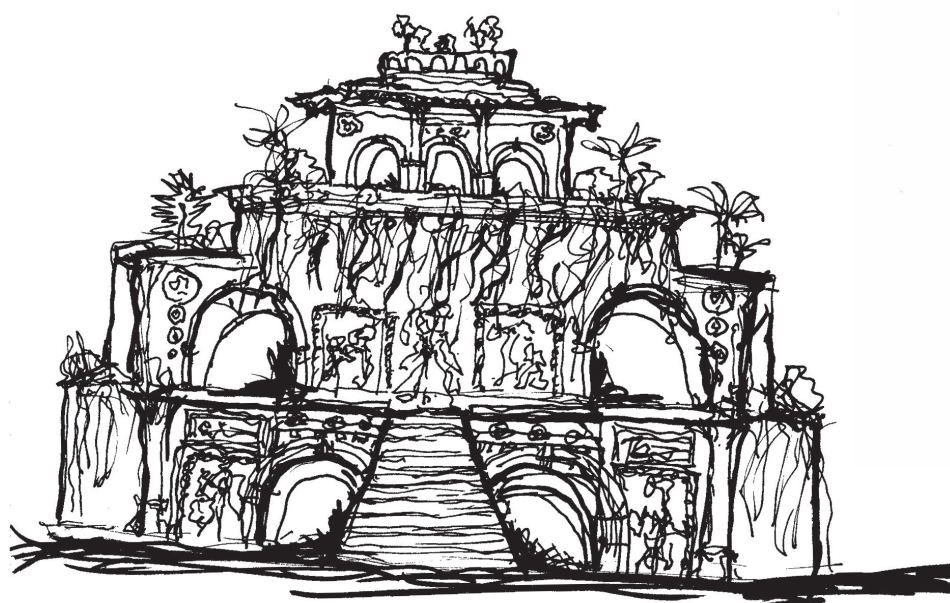
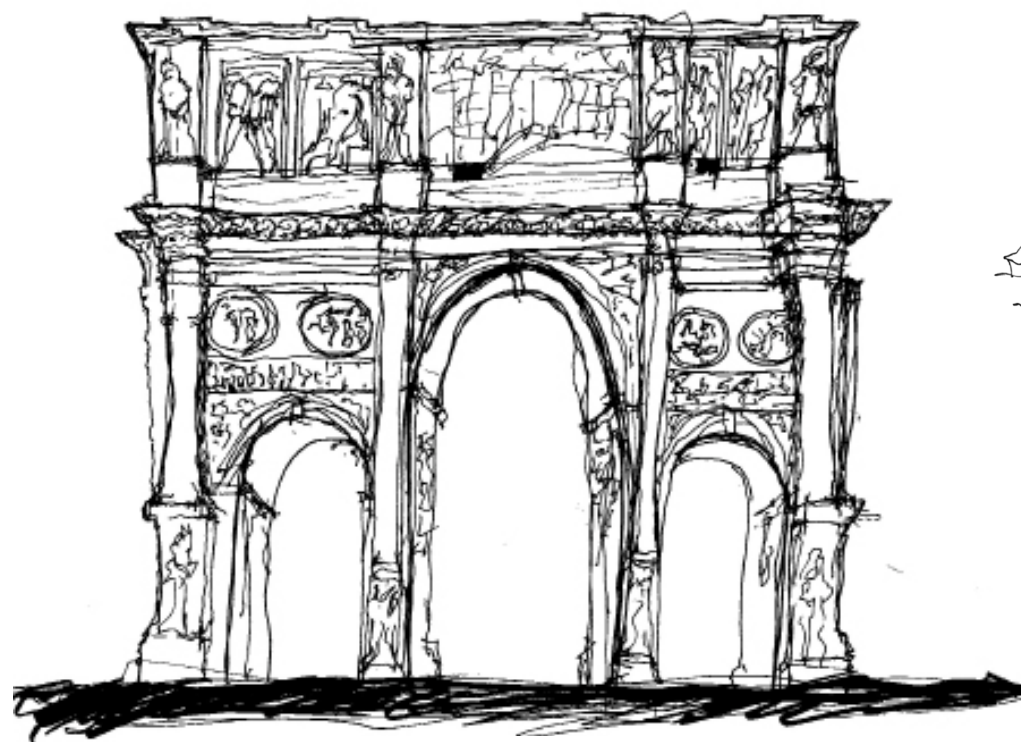
**Location**  
Blacksburg, VA

**Material**  
Spackle, Concrete, #3  
rebar, Water bottles.

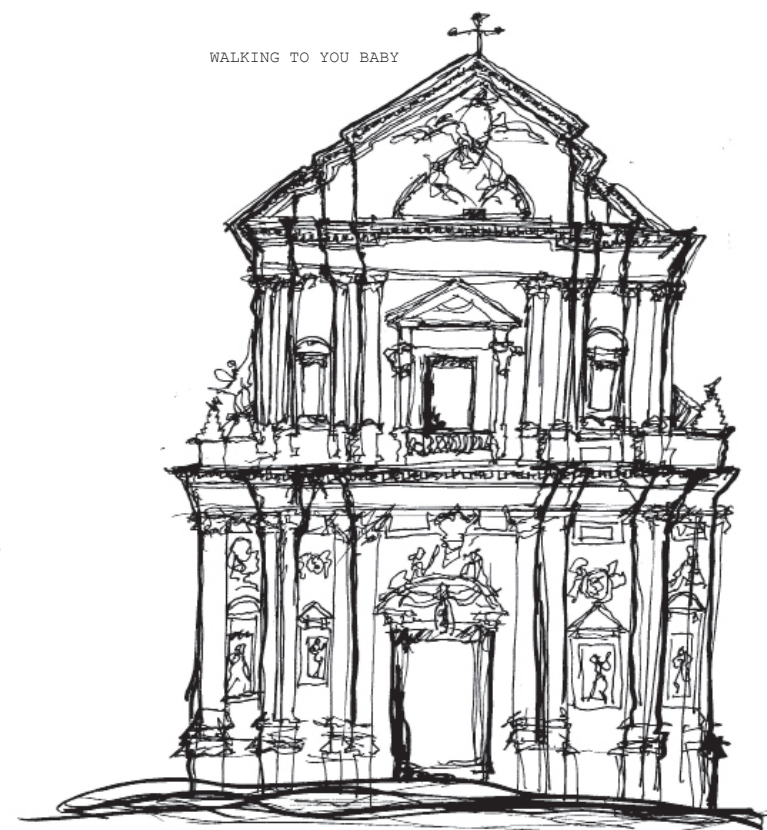
**Year**  
2023







WALKING TO YOU BABY



What I SEEE



Over the past five years I've been propelled into growth by some of the best mentors in modernity. I wouldn't have been able to create if it hadn't been for the guidance of Margarita McGrath, Andrew Gipe-Lazarou, Shawn Wang, Chris Pritchett and Chip Von Wise. Thank you for taking the time to mentor me without respite.

Ben Pennell, you are speical. Thank you for showing me it's okay to be odd and the best path is sometimes the one less traveled. Without you, I would never have the confidence I have today. Thank you.

I can't believe this is only the beginning.



**Project / Title**  
PolliNATION

**Location**  
Venice, Italy

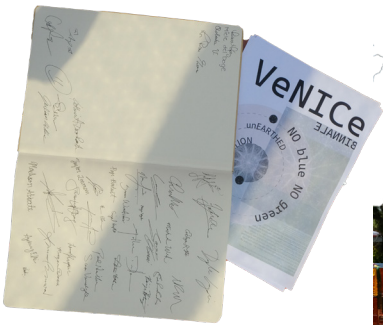
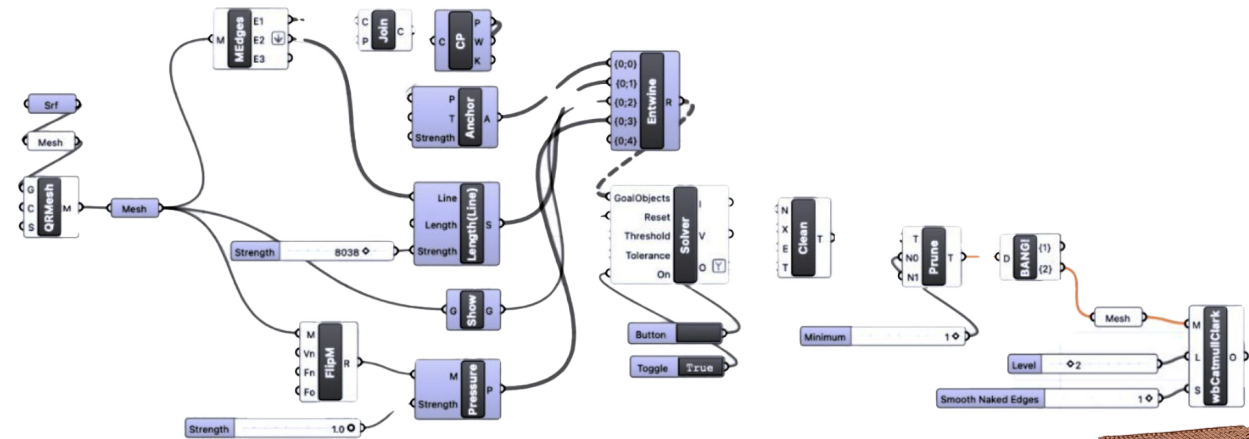
**Materials**  
EFTE, Wood, Steel, Cermaics

**Year**  
2025



# PoIiNATION

THE UNEARTHING OF A NEW REALITY  
Venice Biennale 2025







Each day, we are consumed by the effects of our collective actions. Natural disasters plague our lives. Summers are hotter, winters are colder, and the climate has become as unpredictable as a child on a playground. Our project moved to not only speak to these issues but help in rectifying the wrongs of our ways. A group of 12 students came together of multiple majors and designed a way to help repollinate a garden in Venice. We worked with form, materials, horticulture, biology, engineering and computer science to design a pavilion which helps spread pollen to the near by area.

While the design itself was collaborative, the creation and construction of the pavilion came down to the architects and engineers to put together. We worked with firm Cloud9 and Blumer Lemen through SD and CD phases to check our calculations, measurements and well, make sure the structure wouldn't hurt anyone.

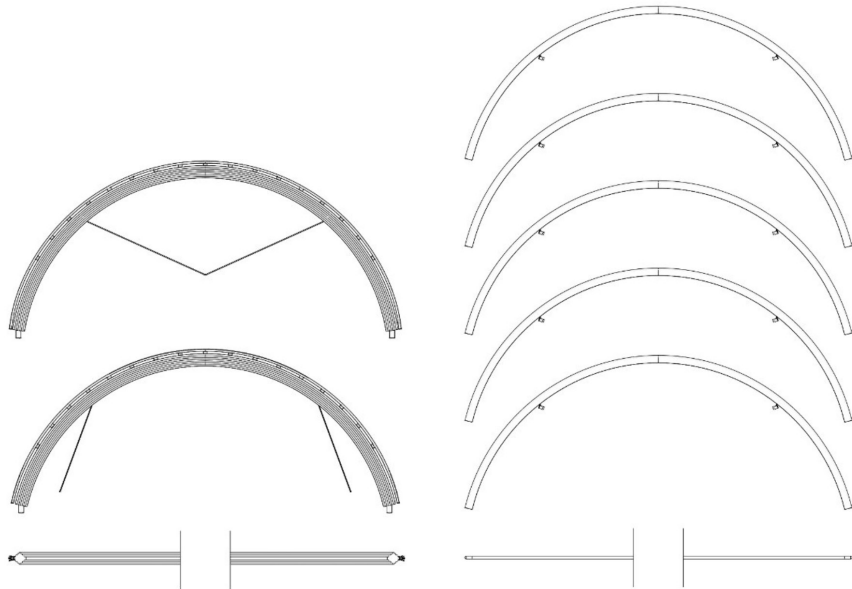
The joint pictured on the top and side is a heavy steel joint with a hole in the middle for the effe pump to sit through. The joint takes on the loads of the steel cables that help hold down the effe. The ETFE not only is light and helps keep the structure to a low load, but allows for the interior to become a green house, The double insulation of the ETFE keeps the temperature perfect for plant growth.



The structural beams were fabricated off-site in Switzerland using local Swiss timber. Spencer and I worked tirelessly calculating precise measurements and drawing detailed joint connections for the arches.

The most interesting aspect of our structure is that it forms an ellipse rather than a circle, meaning it has two distinct radii. This geometric complexity required us to use multivariable calculus to perfectly calculate the curvature of each beam. I must admit my math skills were quite rusty after tackling these intensive calculations.

Once fabrication was complete, the beams were transported from Switzerland to Venice by train. Our team of students then collaborated to construct the pavilion on-site. Throughout the construction process, we carefully monitored the placement of each beam.



**Project / Title**  
Blur

**Location**  
Netherlands?

**Year**  
2024

**Project / Title**  
Pollen

**Location**  
Everywhere

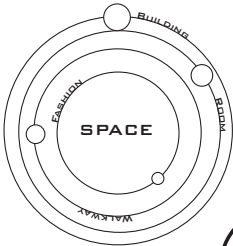
**Year**  
2000





# architecture of THER:

CORB, ABSURTY AND FENMIMISN?!



```
class WellnessDatabase:
    """Handle database operations for wellness tracking"""

    def __init__(self, db_path="wellness_tracker.db"):
        self.db_path = db_path
        self.init_database()

    def init_database(self):
        """Initialize the database and create tables"""
        conn = sqlite3.connect(self.db_path)
        cursor = conn.cursor()

        cursor.execute("""
        CREATE TABLE IF NOT EXISTS wellness_entries (
            id INTEGER PRIMARY KEY AUTOINCRMENT,
            date TEXT UNIQUE NOT NULL,
            body_rating INTEGER NOT NULL,
            mind_rating INTEGER NOT NULL,
            soul_rating INTEGER NOT NULL,
            body_notes TEXT,
            mind_notes TEXT,
            soul_notes TEXT,
            timestamp DATETIME DEFAULT CURRENT_TIMESTAMP
        )
        """)

        conn.commit()
        conn.close()

    def save_entry(self, date, body_rating, mind_rating, soul_rating,
        body_notes="", mind_notes="", soul_notes=""):
        """Save or update a wellness entry"""
        conn = sqlite3.connect(self.db_path)
        cursor = conn.cursor()

        try:
            cursor.execute("""
            INSERT OR REPLACE INTO wellness_entries
            (date, body_rating, mind_rating, soul_rating, body_notes, mind_notes,
            soul_notes)
            VALUES (?, ?, ?, ?, ?, ?, ?)
            """, (date, body_rating, mind_rating, soul_rating, body_notes, mind
            notes, soul_notes))

            conn.commit()
            cursor.close()

        except:
            cursor.execute("""
            SELECT body_rating, mind_rating, soul_rating, body_notes, mind_notes,
            soul_notes
            FROM wellness_entries WHERE date = ?
            """, (date,))

            cursor.fetchone()
            conn.close()
            result = cursor.fetchone()

            if result:
                body_rating, mind_rating, soul_rating, body_notes, mind_notes, soul_notes = result
```

8:30am You shimmy out of your tight foorway and wash your face and hands in the communal bathroom on the 3rd floor, it annoys you greatly it isn't in your room, but talking to the other people before breakfast always puts you at ease in this strange building

Project / Title  
The Architecture of other

Location  
North Brother Island, NYC

Medium  
Vray and Rhino

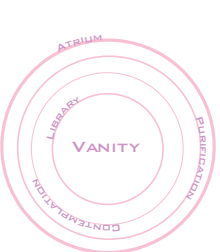
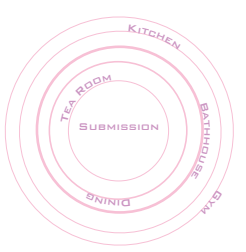
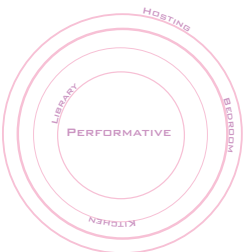
Year  
2025



No longer does society define itself by ethical codes, a stark turn in society marked by Le Corbusier **Towards a New Modernism**. What if Corbusier was blinded by the desire for growth and responded to modernism incorrectly? I believe he overlooked modernisms fervent obsession with internal growth. No longer should the house be defined as a machine...our architecture could revolutionize us. One which pushes us to postulate and redefine the way we interact with the world. It would prioritize equality and empathy, buildings which desire us to

better inhabitants and human beings. My thesis desires to do just this. The space mimics feminine qualities, taking on the overtly restrictive and insane provocations that is found within the female's spatial conditions. **The absurdity of a period**, of a bra, of a corset, of a kitchen, of a bedroom... The spaces would lead the user to realization by overly feeling their body and mind, through the manipulation of typical forms and program – **a place where the physical and metaphorical insanity of femininity exists**. A place where women who aren't yet aware, men who disown women's suffering,

and non-gendered individuals turn the blind eye, can begin to feel radical compassion. Through **strange manipulations of form**, expansion and contraction, bizarre pragmatic connections and displays. **We become reprogrammed on an isolated site where the world can no longer affect us**, where the forces of oppression no longer reside – a place where realizations can occur in isolation. Post staying here for a few months, the user can move back into the city. Reinvigorated by a new sense of their body and mind, ready to interact with each person more gently.

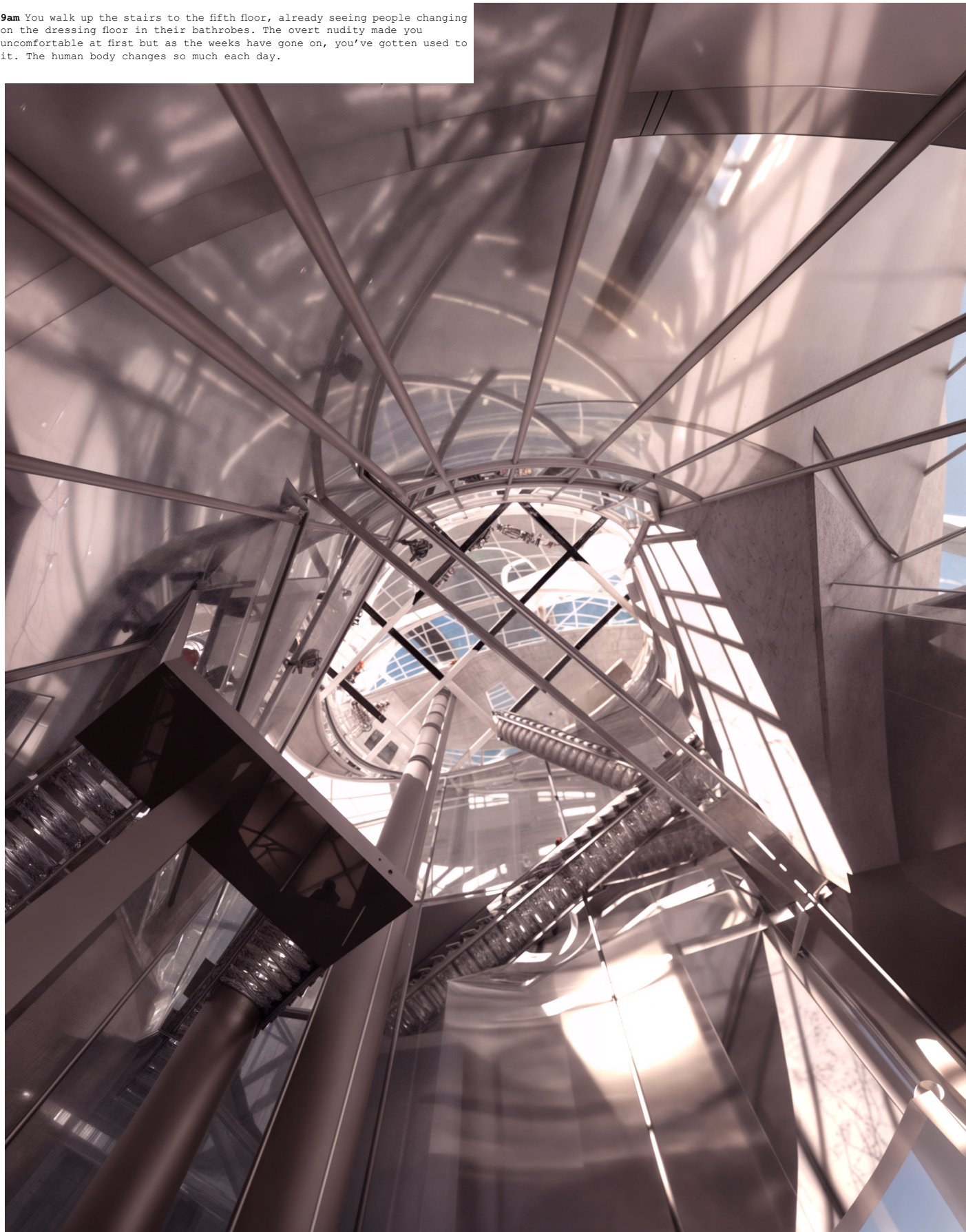


**4pm** You walk back home and wash off in the baths. You duck through the doorway and the strange ceilings always make you uneasy. It nice to relax in though, you wish everyone could feel this type of bliss. You are starting to really connect with your body.



**5pm** You go to one of the therapy rooms and sit silently waiting to talk about everything you've learned. You truly enjoy talking about what you've learned, you don't like the contemplation spaces as much.

**9am** You walk up the stairs to the fifth floor, already seeing people changing on the dressing floor in their bathrobes. The overt nudity made you uncomfortable at first but as the weeks have gone on, you've gotten used to it. The human body changes so much each day.



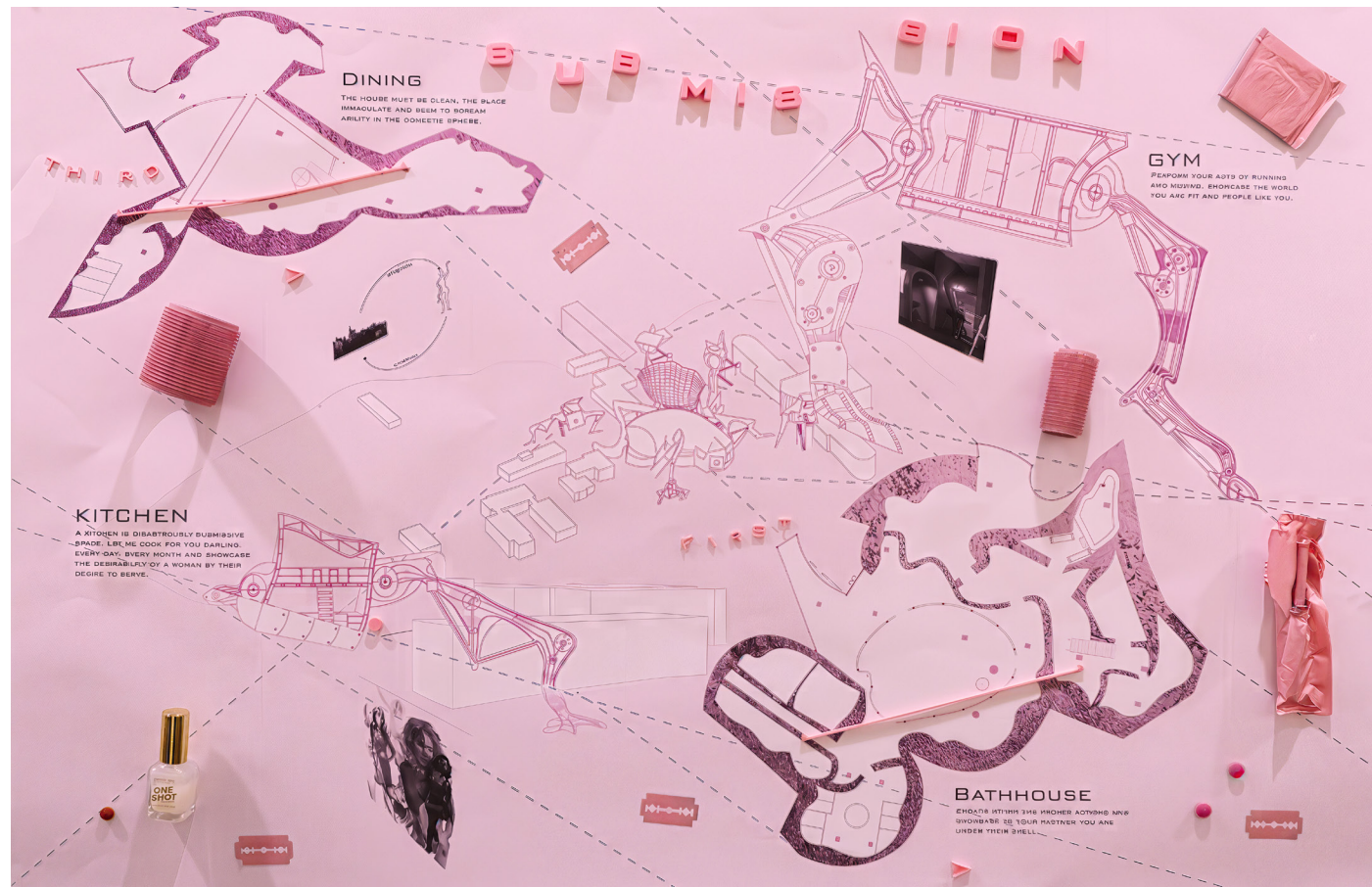
**Project / Title**  
Facets of womandhood  
**Location**  
Everywhere  
**Year**  
Every year



**Project / Title**  
Walkway pressure  
**Location**  
Blacksburg, VA  
**Medium**  
3D printer  
**Year**  
2024

**10:30am** Everyone settles into breakfast. You across the atrium and see people still eating in the squished dining section. It always hurts your back too much, weird.





**11:30am** Some people take the elevator to the 6th floor, and you wander outside to the gym. The walkway is filled with trees and long grass, the buildings around you still falling apart, but their quaintness give you joy.

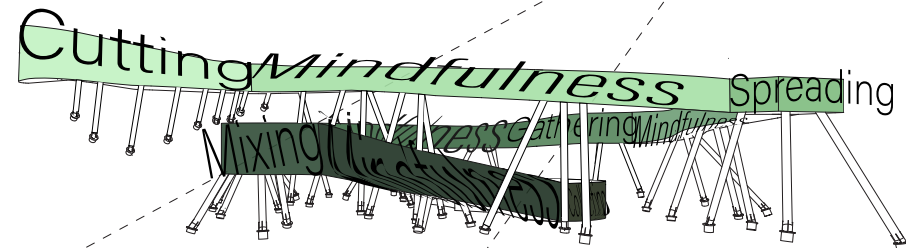
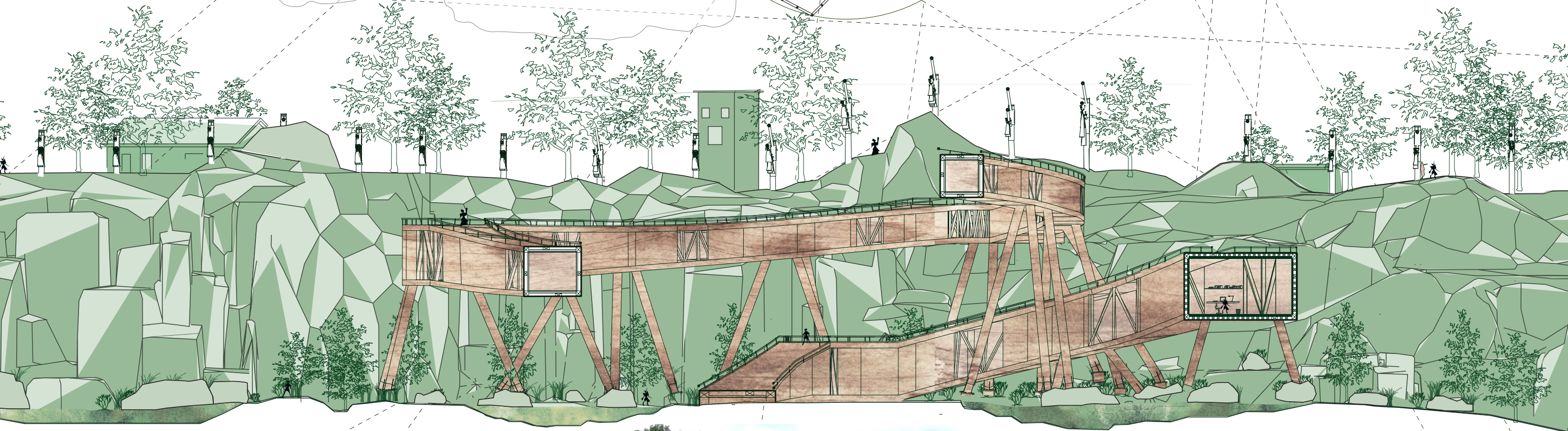
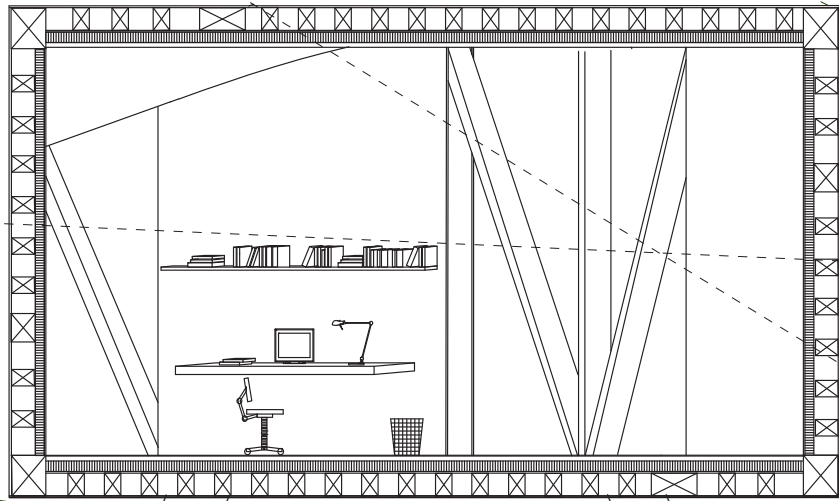
12pm You take a spot overlooking Manhattan, almost perfectly eye height. You're a little too tall but everytime you bed down you see the World Trade Center. As you leave the gym you see a few people running on the treadmills through the full body windows, its strange seeing the human body from behind.





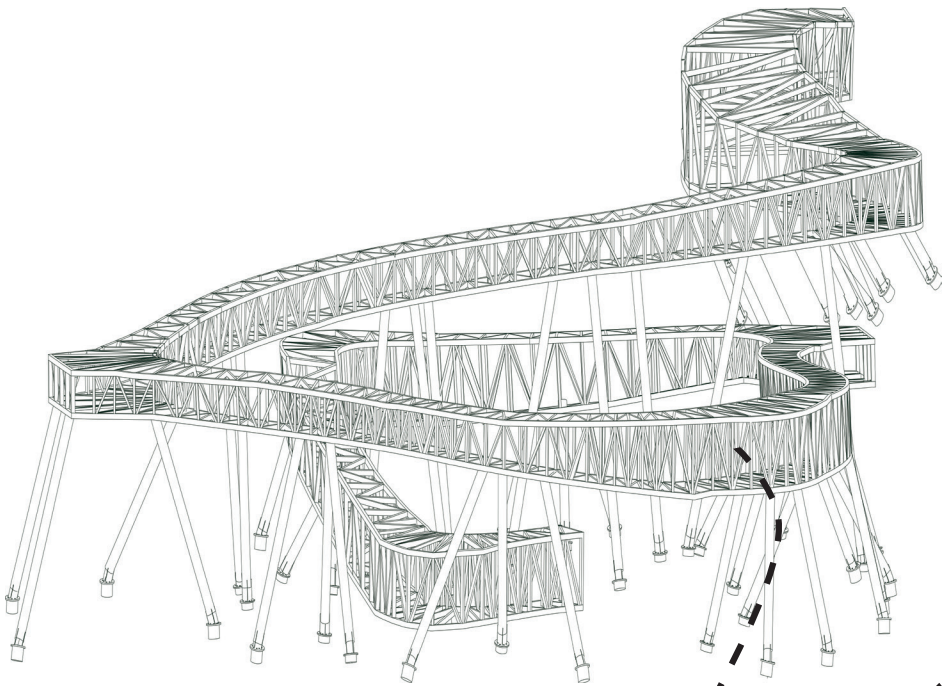
# THE MINDFUL PATH:

CHANGING CONSUMPTION INTO MEDITATION

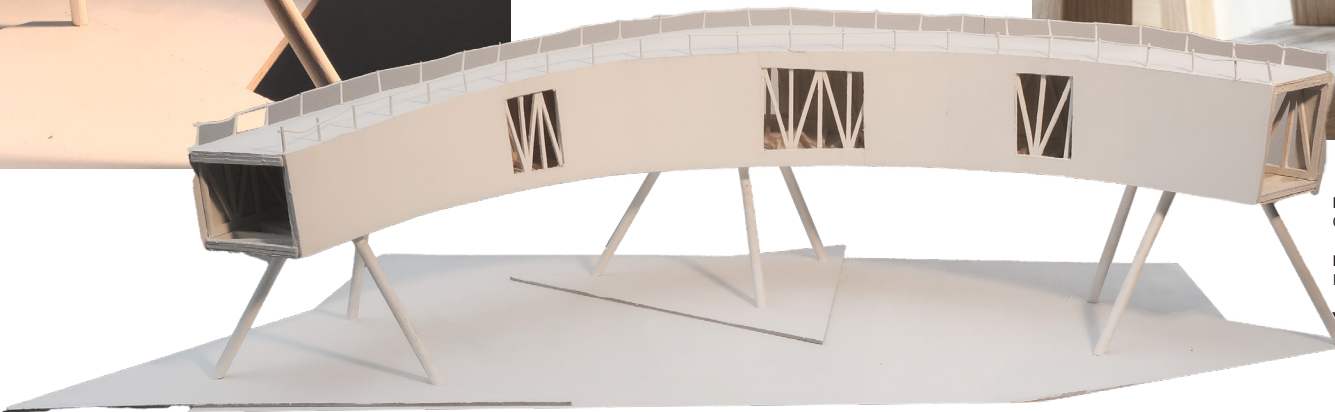
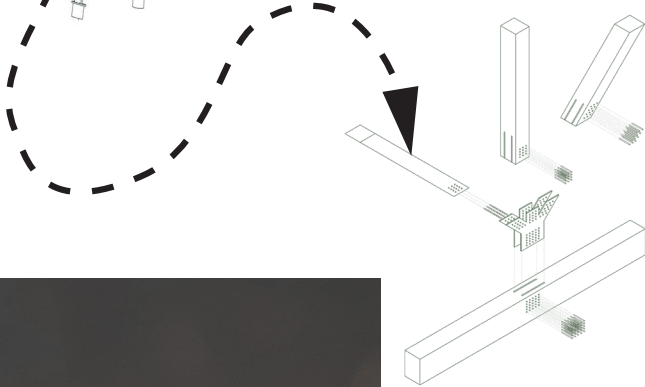


DRYING  
LAB  
POOLS





The building employs an innovative integration of architecture, ecology, and textile production through the use of algae. Strategically positioned within a former quarry landscape, the building capitalizes on the site's unique microclimate and mineral-rich runoff, which support the growth of specific algae species native to such environments. Algae cultivation systems are embedded into the structure's elongated roofscape and adjacent ponds, allowing for continuous harvesting. Inside, biofabrication labs convert this algae into sustainable textiles, leveraging its high cellulose content for biodegradable yarns and dyes. This process reclaims a post-industrial site while generating materials for clothing, uniting mindful environmental restoration with circular design.



**Project / Title**  
Grace Farms  
**Location**  
New Canaan CT  
**Year**  
2012



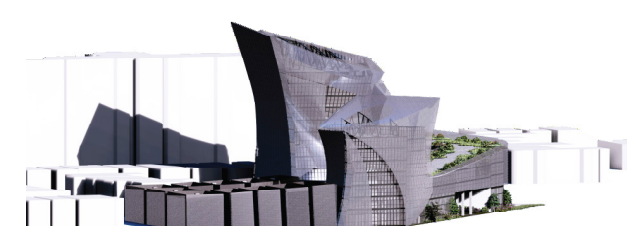
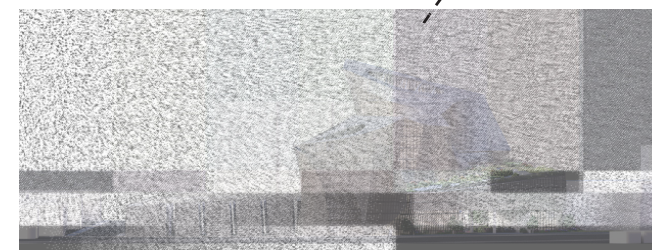
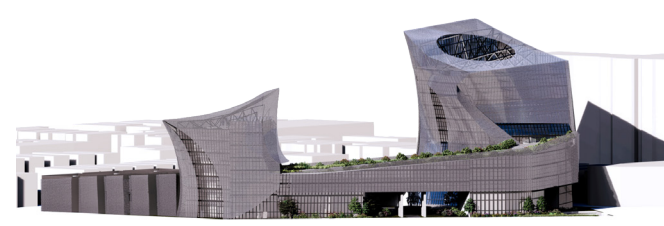
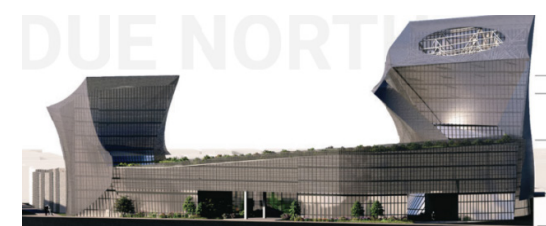
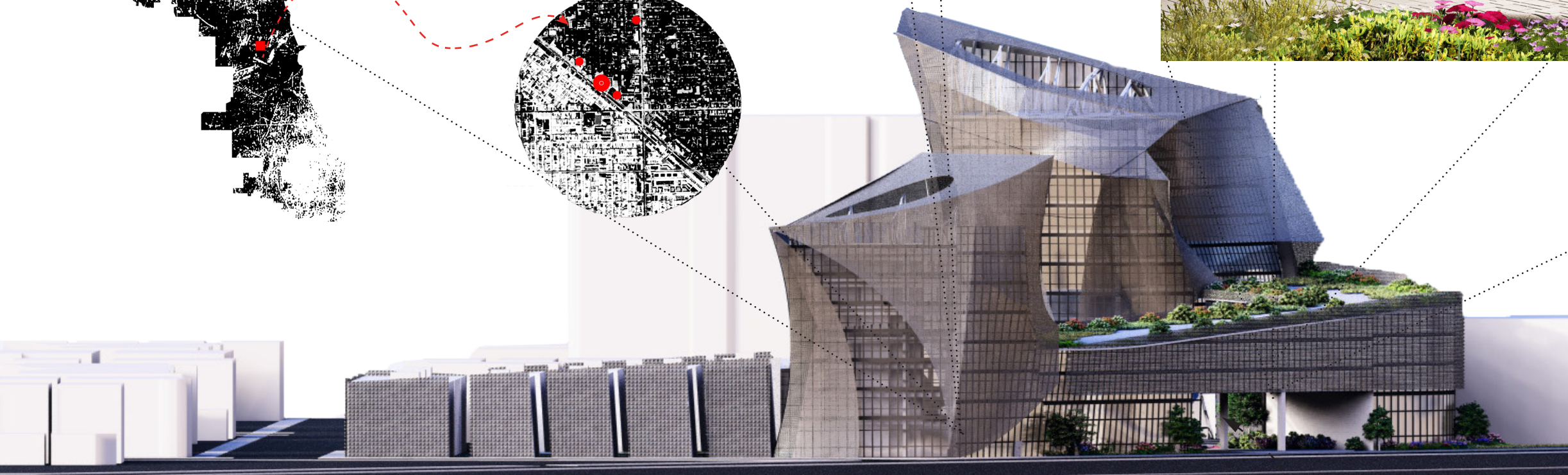
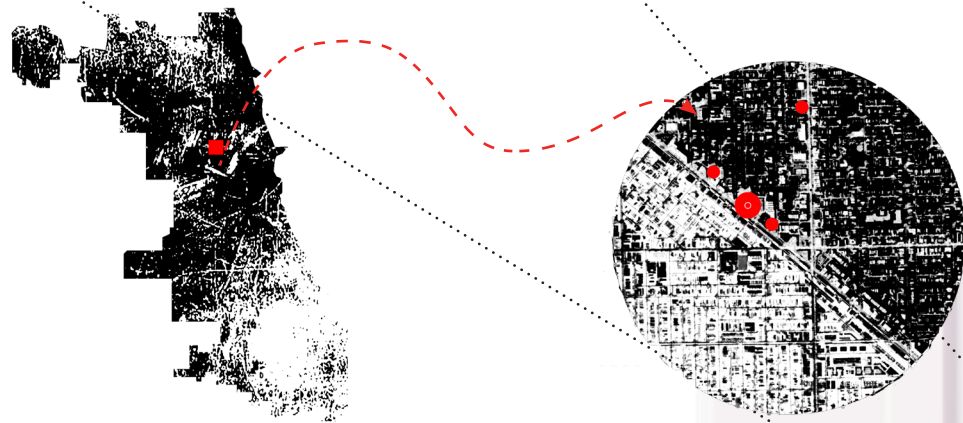
**Project / Title**  
Mines Museum  
**Location**  
Switzerland?  
**Year**  
2007





# SALSA DANCING:

THE PROPENSITY OF  
ICONOGRAPHIC ARCHITECTURE



**Project / Title**  
Due North elevation

**Location**  
Chicago, Illinois

**Medium**  
Lumion, Rhino and  
Photoshop

**Year**  
2024



Our street is a cultural center of Logan square, sitting between two music venues and dance studios. Despite it being a **cultural center**, there was no iconic architecture that proved the site is a center of culture. What a conundrum?

Since the 1960s, Logan square has been historically Hispanic but recently, it's undergone **gentrification**.

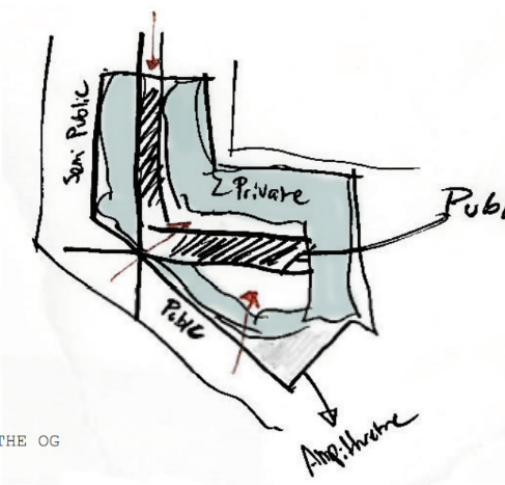
The site DESIRED an icon that would forever speak to the heritage that was slowly being washed away.

The connection to Latino culture came from the movement and forms of salsa dancing. The two towers stem from the **dualistic nature of salsa dancing**.

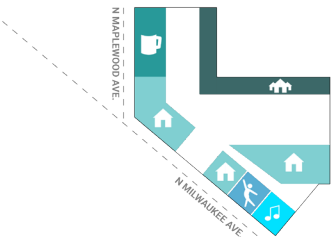
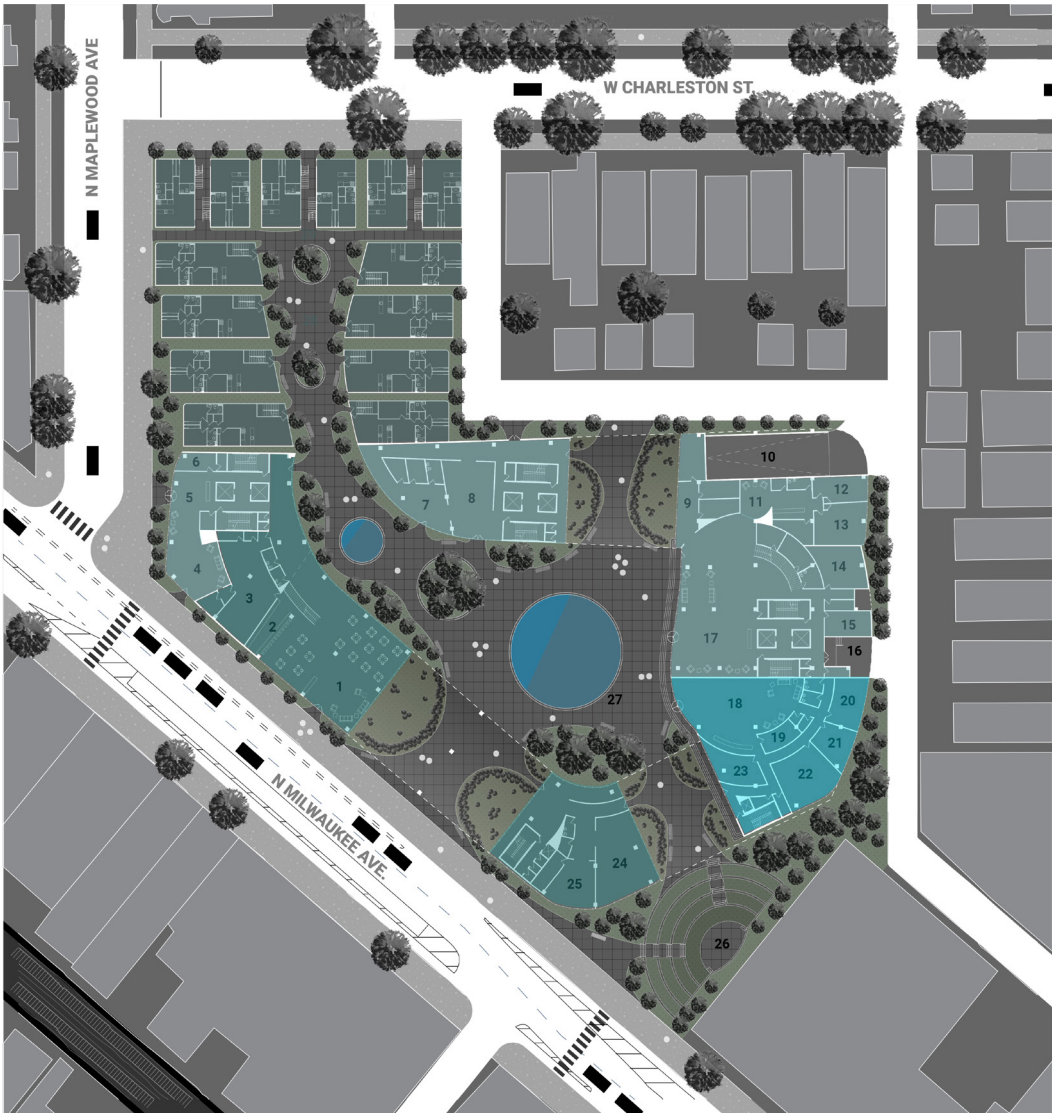
Additionally, the **fabric** of a salsa dancers dress became the facades movement, patterns of a salsa dancers feet became the angulations in the screen and the languid nature of a dancers movement became the façade perforations.

An effect of cohesion was achieved by a site plan that integrated a housing complex, brewery, three flats and a music school. Each laid out in a deliberate way **that invited residents in** to a bustling community.

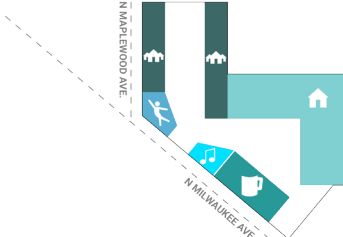
Overall the complex mixed an elegant form, with diagrammatic ideas and a fluid plan. Each part of the building took facets from different famous buildings around the world to create something fantastic.



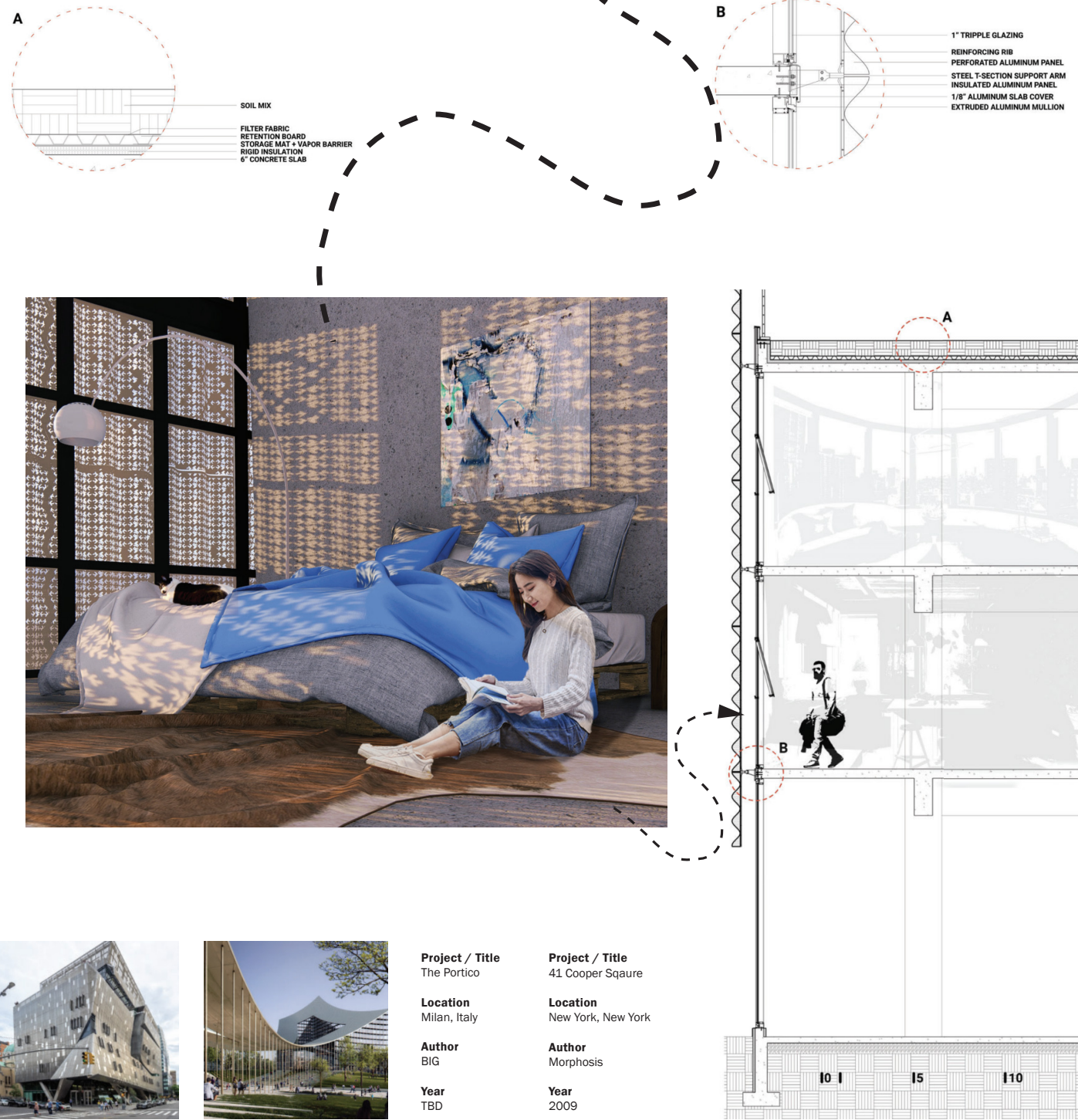
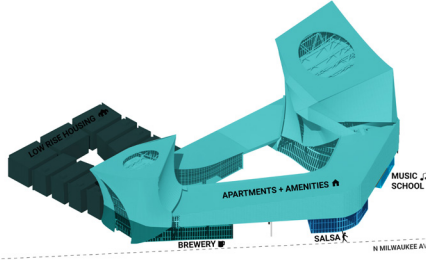
- GROUND FLOOR**
- BREWERY LOBBY 1
  - BAR 2
  - KITCHEN 3
  - LOUNGE 4
  - WEST TOWER LOBBY 5
  - OFFICE 6
  - BIKE REPAIR SHOP 7
  - BIKE STORAGE 8
  - LEASING OFFICES 9
  - PARKING RAMP 10
  - DAYCARE LOBBY 11
  - INFANT DAYCARE 12
  - CHILD DAYCARE 13
  - MECHANICAL ROOM 14
  - MAIL ROOM 15
  - LOADING DOCK 16
  - EAST TOWER LOBBY 17
  - MUSIC SCHOOL LOBBY 18
  - MUSIC SCHOOL OFFICE 19
  - PRACTICE ROOM 1 20
  - PRACTICE ROOM 2 21
  - PRACTICE ROOM 3 22
  - PRACTICE ROOM 4 23
  - SALSA STUDIO 1 24
  - SALSA STUDIO 2 25
  - AMPHITHEATER 26
  - FOUNTAIN 27
  - 3-FLATS 28
  - MULTIPLEXES 29



ITERATION 1



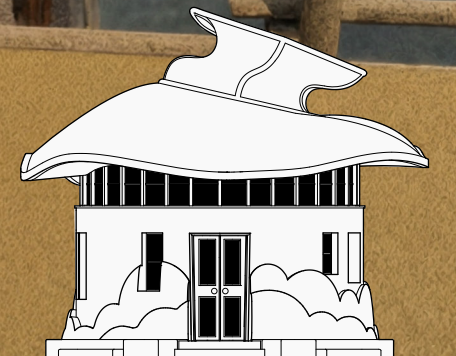
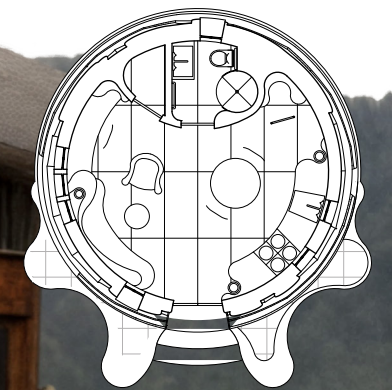
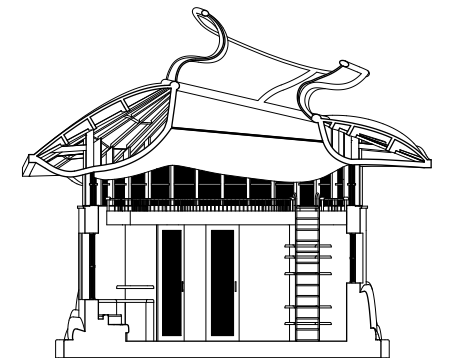
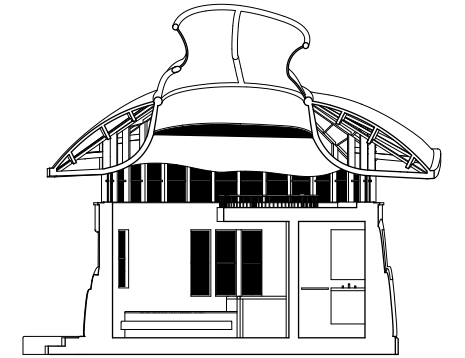
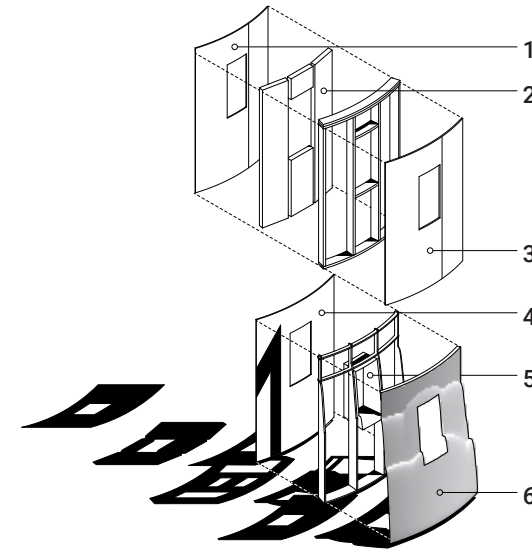
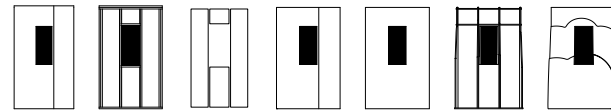
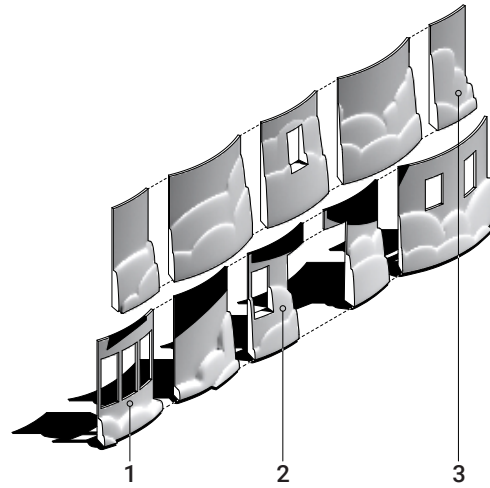
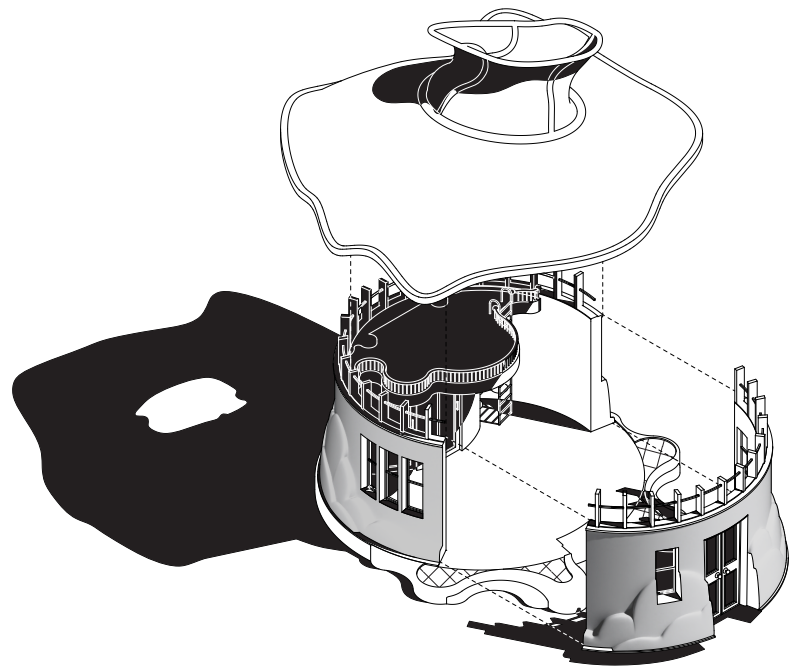
ITERATION 2





# RoundHouse:

THE REJUVINATION OF WESTERN AMERICAN



0' 4' 12'